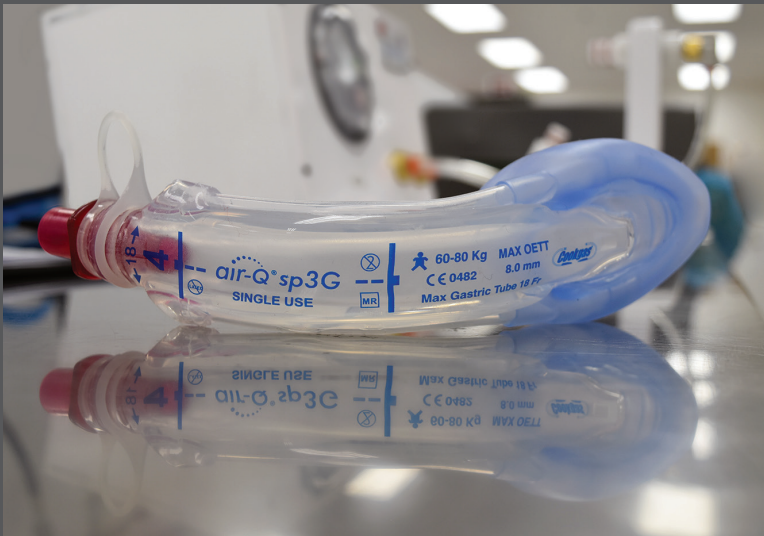


SunMed



Your global market leader of consumable respiratory and anesthesia products.



STRONGER TOGETHER

Together, Expanding Clinical Solutions Aligned to Your Care Continuum

SunMed and Salter Labs, two long-time, trusted names in medical device manufacturing, have joined forces to provide the most comprehensive collection of consumable anesthesia and respiratory products available from one manufacturer.

From patient intubation aids to monitoring devices, we are proud to feature proven and respected brands including: Ethox, IntuBrite, Monitor Mask, Parker Medical, Salter Labs, SunMed, and Ventlab. Each brand stands alone in reputation and is now a part of the SunMed family of brands.

Patient Safety



Respiratory products that enhance procedure effectiveness

Anesthesia products that improve intubation and sedation safety

Patient Comfort



Anatomic designs and soft materials that fit and feel better

All products designed with usability and comfort in mind

Hospital Efficiency



Faster, safer intubation to reduce OR times

Rapid aerosol delivery that improves workflow and reduces ED LOS



Minimizing Your Total Cost of Care Through Integrated Manufacturing and Logistics

Company-owned and controlled global manufacturing ensures flexibility and responsiveness for our customers. Over 80% of SunMed's family of products are produced at our Zhuhai, China, and Juarez, Mexico facilities. Our key production capabilities include injection molding, extrusion, RF sealing, blow molding, dip molding, compression molding, durable goods, and assembly. Direct access to our manufacturing facilities allows SunMed's product engineering to be nimble and adaptive to customer requests.

Through our combined manufacturing capabilities, customers globally have greater access to our products. Our four distribution warehouses in Texas, Kentucky, Michigan, and Belgium provide faster global supply chain responsiveness. The relationships we maintain with over 30 large and small U.S. distributors, and contracts with all major Group Purchasing Organizations (GPOs) provide more clinicians with the right products when patients need it most. And finally, our sales footprint spans over 100 countries and is now supported through our integrated operations.

Zhuhai, China



- 200,000 sq ft manufacturing facility
- 450 highly skilled employees
- ISO 13485 certified
- US FDA registered
- Health Canada approved
- MDSAP

Juarez, Mexico



- 130,000 sq ft manufacturing facility
- 1,000 highly skilled employees
- ISO 13485 certified
- MDSAP
- US FDA registered
- Health Canada approved
- Japan PMDA
- South Korea KFDA

Key Production Processes

Injection Molding
63 Molding Machines

Extrusion
11 Extruders

Compression Molding

Blow Molding

Dip Molding

Durable Goods

Assembly

RF Sealing

Complete Continuum of Care

From initial airway visualization to post-op monitoring, SunMed offers complete solutions for anesthesia and respiratory care. Salter Labs brings class leading capnography cannulas and masks, as well as IntuBrite laryngoscope systems with ultraviolet and white LED lighting. These complement SunMed's expansive lineup of disposable and conventional laryngoscopes, airways, pressure infusion, resuscitation bags, nerve stimulators, and VentFLO, SunMed's newest ETCO₂ sampling cannula with reflective connector.

Salter Labs also completes the SunMed airway portfolio with the new air-Q3 series ILAs (Intubating Laryngeal Airways). The ILAs provide an effective and safe access to an airway, featuring a patented epiglottis elevator and ETT guide ramp. The Parker Flex-Tip ET tube significantly improves ETT first-pass success and patient safety. Independent clinical studies from around the world demonstrate its significant clinical advantages over standard ETTs.



Separately, SunMed and Salter Labs are powerful Brands in the anesthesia, respiratory, and home care medical device industries. Together, our product portfolio offers the most comprehensive solutions to support your clinical and cost requirements.

We have you covered from initial airway visualization to patient monitoring.





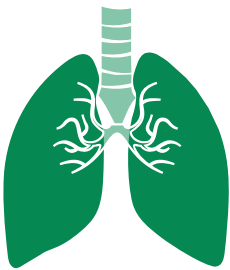
Anesthesia Care

Capnography:

nasal and oral/nasal ET_{CO}₂ cannulas, masks, sampling lines, CO₂ indicators

Airway Management:

disposable laryngoscopes, reusable laryngoscopes, bougies, endotracheal tubes, laryngeal airways, oral and nasal airways



Respiratory Care

Oxygen Delivery:

nasal cannulas, oxygen masks, supply tubing, humidifiers, securement

Aerosol Delivery:

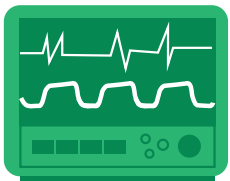
nebulizers, valved holding chambers

Resuscitation:

manual resuscitators, hyperinflation systems, t-piece resuscitators

Ventilation:

CPAP & NIV masks, non-invasive ventilation masks, BV and HME filters, CO₂ indicators



Patient Monitoring

Surgical/Anesthesia:

blood pressure cuffs, pressure infusers

Local/Regional Blocks:

nerve stimulators

Sleep Diagnostics:

transducers, thermistors, cannulas



Most Expansive Laryngoscope Selection

SunMed Disposable & Reusable

SunMed offers one of the largest selections of laryngoscopes available for difficult and routine intubations. The variety of blade and handle styles include popular features such as: fiber optic illumination, LED illumination, disposable materials, mercury free batteries, non-painted blade surfaces, anti-glare finishes, and specialty blades for unique intubations.



Blades

- Greenline®/D™ Disposable:
 - Macintosh = 6 sizes
 - Miller = 6 sizes
 - Specialty blades = 2 options, 4 sizes
- Greenline®/D™ All-Metal:
 - Macintosh = 5 sizes
 - Miller = 6 sizes
 - Specialty blades = 2 options, 4 sizes
- Conventional Disposable:
 - Macintosh = 4 sizes
 - Miller = 6 sizes
- Greenline® Reusable:
 - Macintosh = 16 sizes
 - Miller = 13 sizes
 - Specialty blades = 23 options, 45 sizes
- Conventional Reusable:
 - Macintosh = 6 sizes each
 - Miller = 12 sizes
 - Specialty blades = 24 options, 54 sizes

Handles

- Greenline®/D™ Fiber Optic Disposable = 6 sizes
- Greenline Fiber Optic Reusable = 16 options, 6 sizes
- Conventional Reusable Chrome Plated = 6 sizes

SunOne™
SYSTEM



Raising the Bar for Airway Illumination

IntuBrite® Dual LED Disposable Laryngoscopes

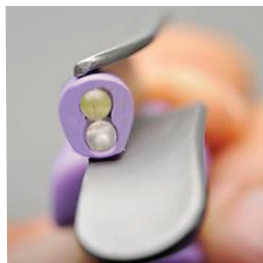
Our unique Dual LED lighting system, combining ultraviolet and white LED light, provides clear illumination and definition to greatly improve visualization of the airway. Each blade is constructed from medical grade stainless steel, and the handles from aircraft aluminum. The two-click feature helps ensure bulbs in blade are securely engaged with power source.



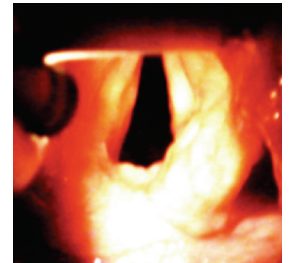
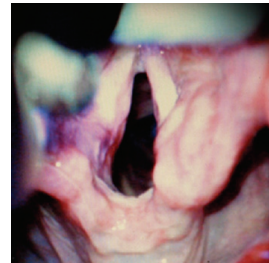
IntuBrite features full range for the OR, sizes as small as Miller 000 for the NICU, and configurations that simplify crash cart stocking help the entire hospital benefit from choosing IntuBrite laryngoscopes.

IntuBrite® Dual LED lighting

- Blended ultraviolet and white LED illumination
- Improved clarity and definition without glare
- Outstanding visualization of the glottic opening
- Exceptional depth perception and tissue detail



IntuBrite Ultraviolet
+ White Dual LED



Competitive
Fiber Optic LED

The Airway That Creates an Airway

Salter Labs air-Q3 Laryngeal Mask

The air-Q³ comes in four variants of intubating laryngeal airways that deliver safety and confidence in airway management, no matter what airway challenges you face.

Item Shown:
air-Q³G Series

Sizes:
00 - 5.0

Built-up mask heel
for improved seal

Aperture enables
transfer of air if
the inlet becomes
blocked

ET tube ramp
helps facilitate
intubation and
directs the
endotracheal
tube toward
the laryngeal
inlet

Gastric inlet access point

Exclusive epiglottis
elevator lifts the
epiglottis to maximize
cuff placement



Color-coded removable,
tethered connector enables
insertion of endotracheal tube
through the airway tube

Inflation line
and pilot balloon

Medical grade silicone airway
tube with integrated bite block

Gastric access tubes on both
sides of airway tube

air-Q® 3 & air-Q® 3G



Item Shown:
air-Q® 3G

- Both air-Q® 3 and air-Q® 3G feature an inflation line to help insure seal at top of the glottis
- air-Q® 3G has a gastric inlet and dual access tubes on either side of the airway tube to reduce risk of gastric insufflation

air-Q® sp3 & air-Q® sp3G



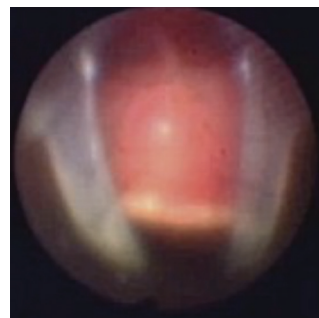
Item Shown:
air-Q® sp3

- Self-pressurizing cuff utilizes your positive ventilatory source to automatically inflate the cuff to form a seal without manual inflation
- air-Q®sp3G features a gastric inlet for cases where gastric reflux may be an issue

air-Q®3 Series Features

- Anatomically correct placement of the masked airway
- Exclusive epiglottis elevator helps to maximize visualization and minimize airway resistance
- Guide ramp to assist with ETT insertion and placement
- Color coded cap for quick sizing; removable to accept a wide range of ETTs
- ET tube ramp helps direct scopes and ETTs directly to trachea
- Ideal for use in the delivery room, emergency department and bariatric patients where ILA use is necessary

air-Q®3 Provides Better Visual Clarity



Competitive ILA

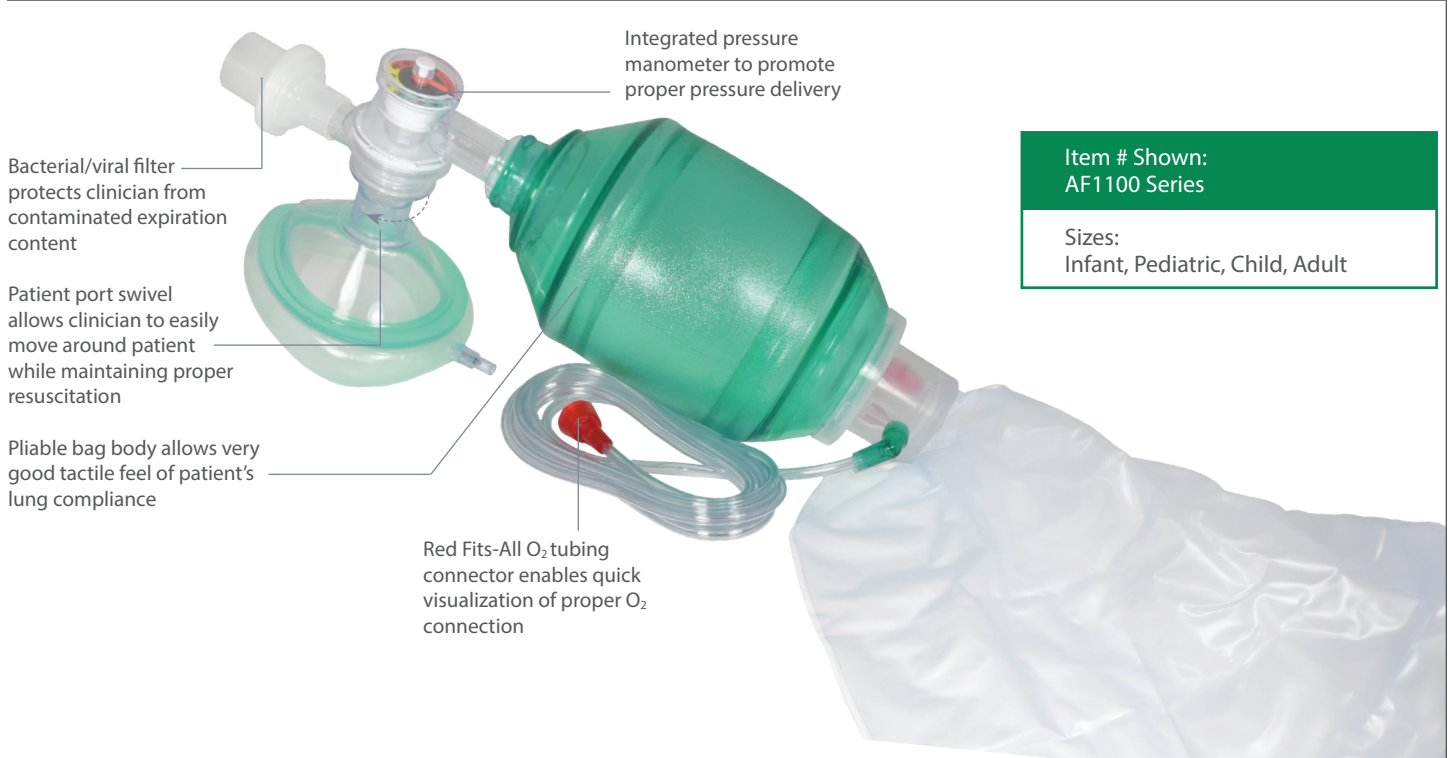


air-Q® 3 Series with
Epiglottis Elevator

AirFlow, Our Best Selling Resuscitator

AirFlow Manual Resuscitator

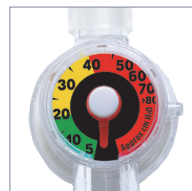
The single use AirFlow Resuscitation/Ventilation Bag from Ventlab comes with or without an integrated, proprietary pressure manometer to promote proper pressure delivery. Available with bacterial/viral filter, oxygen reservoir, mask, and several components to create a custom resuscitation bag.



Components Available

Choose from the following components to create a custom resuscitation/ventilation bag

(Some limitations apply)



Integrated Pressure Manometer



Pop-Off Valve



Bacterial / Viral Filter



CO₂ Indicator



PEEP Valve



Inflatable O₂ Reservoir



Corrugated O₂ Tubing



Collapsible O₂ Accumulator



Flex Neck



Hand Strap



Face Masks

Hyperinflation System

The Ventlab Hyperinflation System is available in five different pleated inflation bag sizes. Available with our signature integrated pressure manometer and components to create a custom system.



Integrated pressure manometer to promote proper pressure delivery

Patient port swivel allows clinician to easily move around patient while maintaining proper resuscitation

Comes standard with stay-put dial to enable clinician to achieve targeted static pressure



Pleated breathing bags in 5 sizes

1/4, 1/2, 1, 2, 3 liter

Components Available



INTEGRATED PRESSURE MANOMETER

Ventlab's innovative color-coded dial clearly denotes pressure delivery:

- Green** - Target pressure level <20 cm H₂O
- Yellow** - Potentially dangerous pressure level
- Red** - Dangerous pressure level



POP-OFF VALVES

40 cm H₂O & 25 cm H₂O
Allows clinician to use an appropriate pop-off level



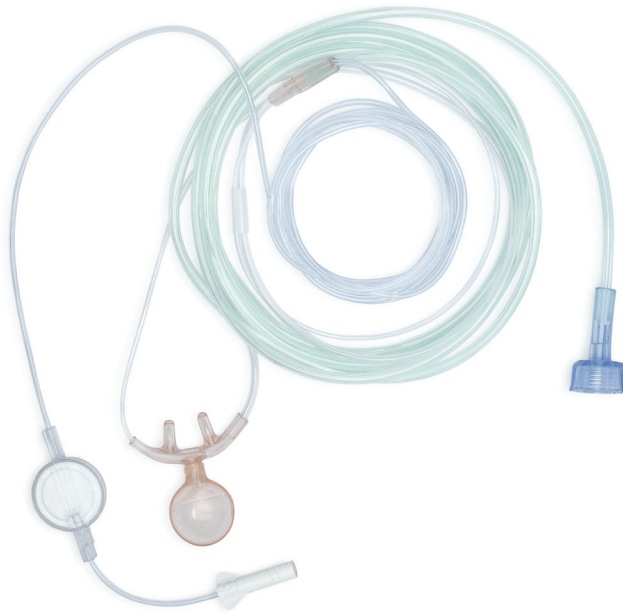
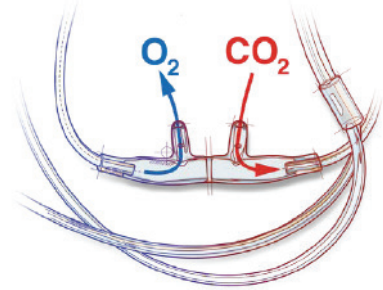
FACE MASKS

Seven inflatable face mask sizes available: small infant, infant, small child, child, and adult (regular, large, wide)
Non-inflatable face masks available

ETCO₂ Reflective Connector Sampling Cannulas

SalterSTAT Orange

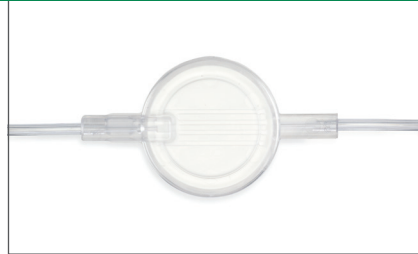
Salter Labs® has been a trusted source for respiratory care products for over 40 years. The SalterSTAT™ Orange series offers a wide range of compatibility with capnography monitors that require reflective connectors including. The divided face piece design has 40% less dead space and superior O₂ delivery compared to the blow-by designs.^{1,2}



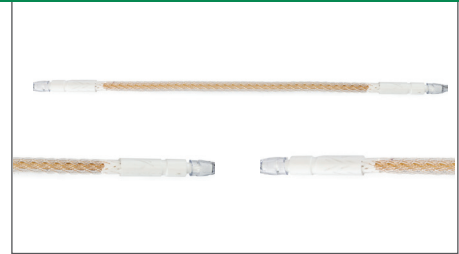
Compatible Connector



Hydrophobic Filter



Nafion® Tubing for Long-Term Applications



SalterSTAT Orange

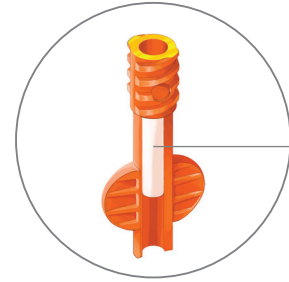
- Ergonomic design provides superior comfort and fit on both adult and pediatric faces
- 40% less dead space in facepiece*
- Proprietary hydrophobic filter protects monitor from moisture and biohazards
- Reflective sample lines available for capnography monitoring
- Nafion for enhanced moisture management in long-term application products.

1. Ebert TJ, Novalija J, Uhrich TD, Barney JA. The effectiveness of oxygen delivery and reliability of carbon dioxide waveforms: a crossover comparison of 4 nasal cannulae. *Anesth Analg*. 2015;120(2):342-438.
2. Data on file. Salter Labs.

Leveling The Field In Waveform Capnography

VentFLO™ ETCO₂/O₂ Sampling Cannula

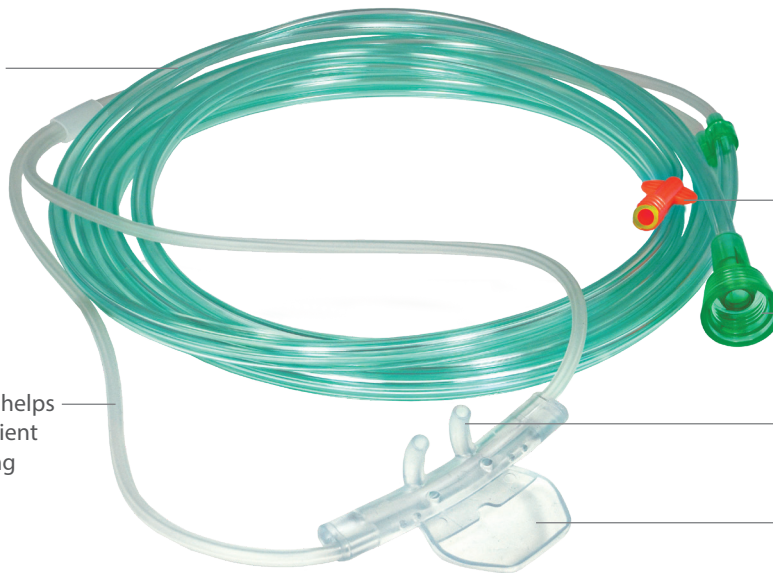
The VentFLO™ ETCO₂ cannula delivers oxygen while capturing an end tidal gas sample, even with simultaneous insufflation of oxygen. A series of strategically positioned holes deliver O₂, and collect CO₂ concurrently through the nares and scoop. This design helps lessen attenuation of the end tidal sample by oxygen dilution, particularly for mouth-breathing patients. This ETCO₂ cannula also features a bright orange reflective style connector, compatible with Microstream enabled capnography monitors.



Hygroscopic filter helps minimize moisture from being pulled into the monitor at the sampling port

3-Channel design throughout tubing and ear piece designed to help prevent kinking

Soft-Ears™ material helps ensure superior patient comfort, even during prolonged use



Reflective style connector with hygroscopic filter inside

Our Fits-All O₂ connector comes standard on all sizes and lengths

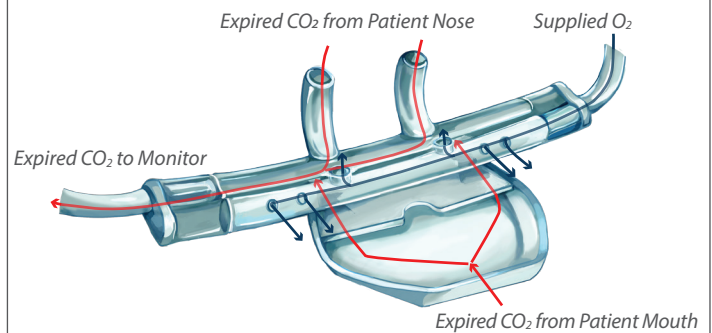
Curved nares made of ultra-soft material

Innovative scoop design enables effective CO₂ monitoring from mouth-breathing patients

VentFLO ETCO₂ /O₂ Oral/Nasal Sampling Cannula

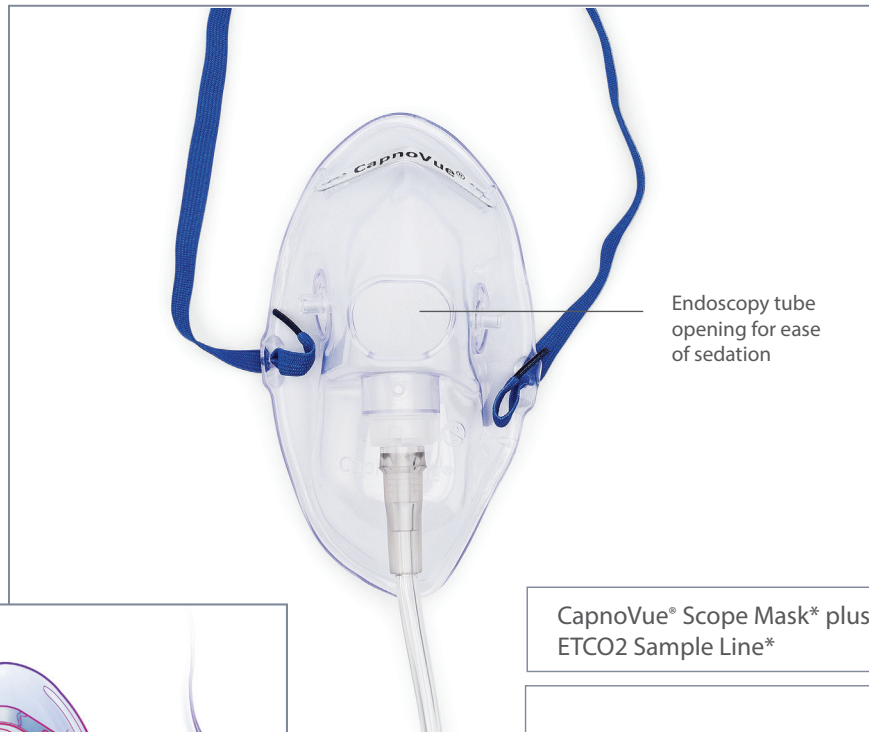
- Innovative design suitable for mouth-breathing patients
- Compatible with Microstream, Capnostream and Oridion capnography monitors
- Oral/nasal cannula simultaneously provides oxygen to the mouth and both nostrils while obtaining CO₂ sampling during spontaneous breathing
- Designed to prevent mixing of fresh oxygen with CO₂
- 3-Channel tubing designed to help prevent kinking
- Available in three tubing lengths

Designed to deliver O₂ and capture end tidal sampling simultaneously

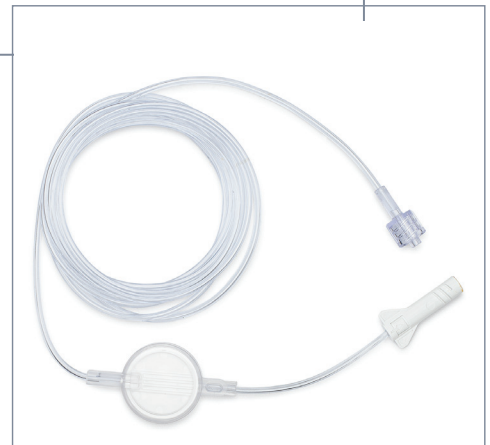
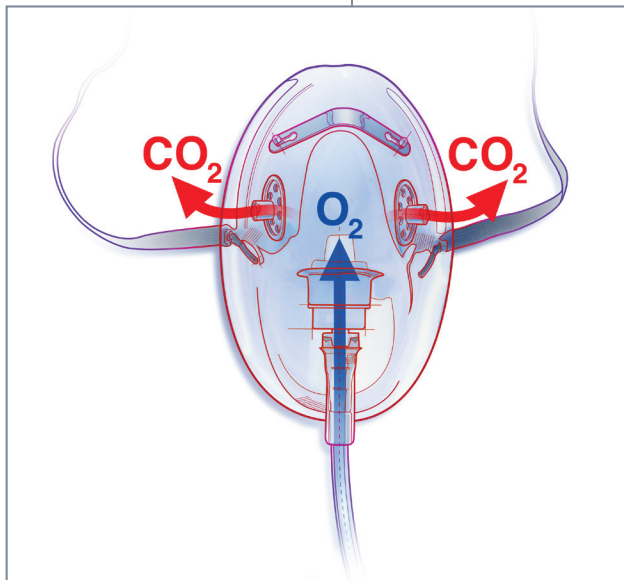


CapnoVue Scope Convenience Kits

Simplify life in your busy endoscopy lab with Salter's Blue Series Kits. The CapnoVue Scope Convenience Kit combines our Scope-Ready mask with your choice of a standard Luer-Lok® or reflective connector ETCO2 sample line.



CapnoVue® Scope Mask* plus ETCO2 Sample Line*



*47MSF8-7-6-50 Shown

- CapnoVue® Masks Provide Higher O₂ Flow Rates with Oral-Nasal Sampling
- Flow dynamics separate gasses by pulling CO₂ toward vents and sampling lines and away from O₂ port
- Each available in two tubing lengths

O₂ Supply Connection



Thread-Grip O₂ Connector

ETCO₂ Supply Connection



Luer-Lok® Connector

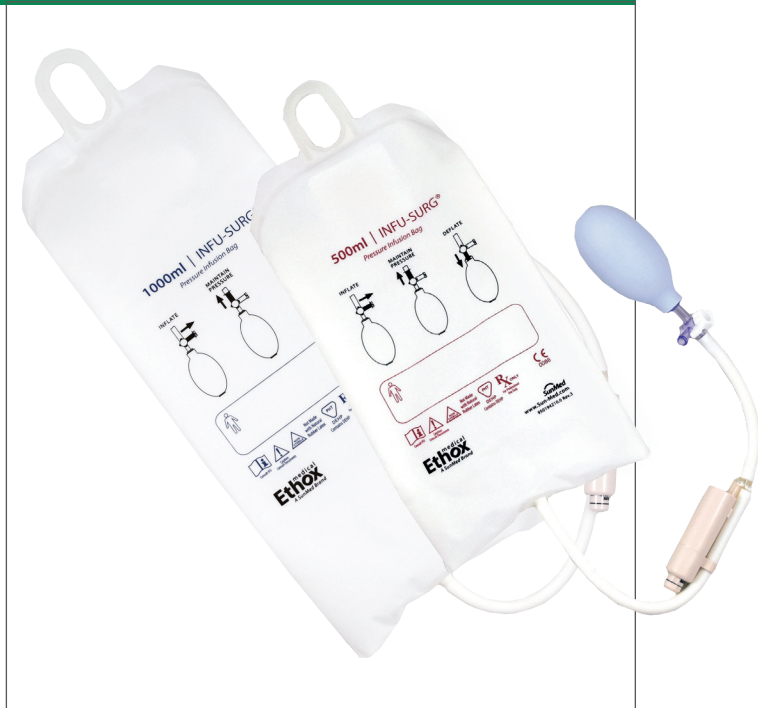


Reflective Connector

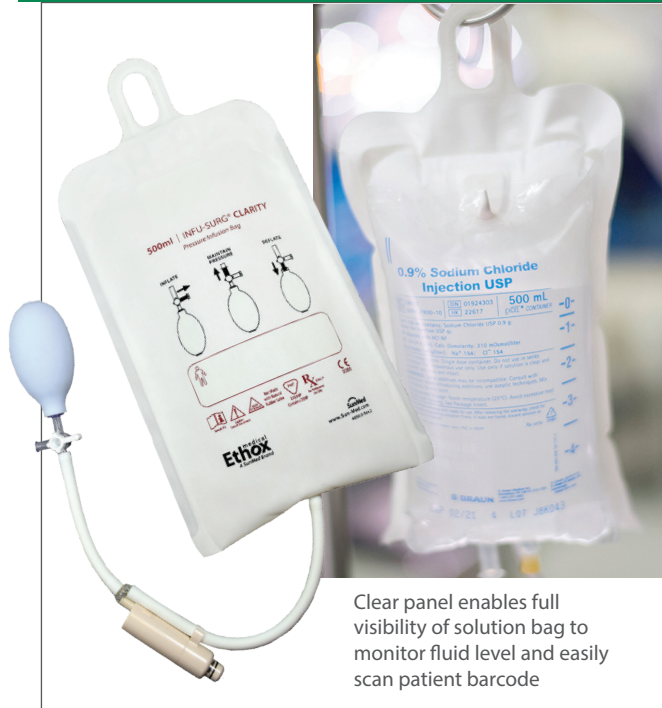
Delivering Medicine Faster, More Effectively

The latex free Infu-Surg® Pressure Infusion Series is a safe, high-quality, reliable device for intravenous and intra-arterial infusion treatment, including A-line pressure monitoring. The Infu-Surg® is a cost-effective, trusted product that medical professionals have relied on for decades. The Infu-Surg® Clarity is designed with a clear panel, the patient label and barcode on the solution bag can be easily scanned.

Infu-Surg® Pressure Infusion Bag



Infu-Surg® Clarity Pressure Infusion Bag



Clear panel enables full visibility of solution bag to monitor fluid level and easily scan patient barcode



Three-way stopcock ensures precise control of pressure while the large oval bulb allows for quick bladder inflation, all with ONE hand



Solution bag hook enables easy bag changing without having to remove the Infu-Surg from the IV pole; keeps fluid bag in proper position while in use



360° view of the color-coded gauge facilitates accurate pressure monitoring while the safety pressure relief valve prevents over-inflation

Infu-Surg® Pressure Infusion Bags

- Infu-Surg® Clarity offers a transparent panel for clear visibility of solution bag
- Welded panel and hook construction are more durable than sewn designs to withstand repeated use
- Dedicated fluid bag hook enables efficient loading and unloading of the system without having to remove the infusion bag from the IV pole
- Pressure relief valve prevents over inflation (330 mmHg pressure relief)
- Large, oval shaped bulb allows for quick and easy inflation of bladder
- Single-handed inflation and deflation design makes it easy to use and requires minimal training
- Suitable for use with external inflation sources
- Loads quickly and easily

IntuBrite EDGE VLS6630/6610

Bring the benefits of video to all patient intubations.

Each IntuBrite Edge System includes all components needed for initial operation:

- Hand-held video monitor and handle with choice of one (1) Reusable Video Blade or Wand
 - Five (5) Disposable Sheaths with Wand
- Rechargeable Batteries (2)
- Wall Charger with USB-DC Charging Cable
- AV Cable (RCA Monitor Cable)
- USB to Mini-USB cable (6630 Edge Plus only)
- Flash Memory Card with adapter
- Reusable rigid stylet (1)
- Soft Case with Foam Insert
- 1 year Limited Warranty



IntuBrite 6610 EDGE

IntuBrite 6630 EDGE Plus with disposable sheath system

Competitive Fiber Optic LED IntuBrite Ultraviolet + White Dual LED

Clinical Collaboration

50+ Year Reputation for Superior Quality and Product Enhancements

The power of our partnerships with key clinical thought leaders drives our passion for improved patient care and outcomes. Innovations driven and designed by clinicians, for clinicians, have yielded world class products that help make their work more efficient and effective.

Our ability to globally manufacture and source consumable anesthesia and respiratory products gives our partners greater leverage and buying power. Working with SunMed, our respected OEM solutions are supported by world-class engineering, clinical, and marketing support. We take the time to understand your go-to-market strategy and timing combined with the desired function and benefit of the product. Together, we help you drive down costs and improve patient care.



Trusted by Our Customers and Industry Leaders

We are respected as a preferred manufacturer of private label products because of our ability to adapt to the needs of our customers and mission to surpass expectations in the market. The ability to source a wider variety of products to a broader network starts with the foundations we've built with industry leaders across the globe.

MSM-REF-0139 Rev2 EMS