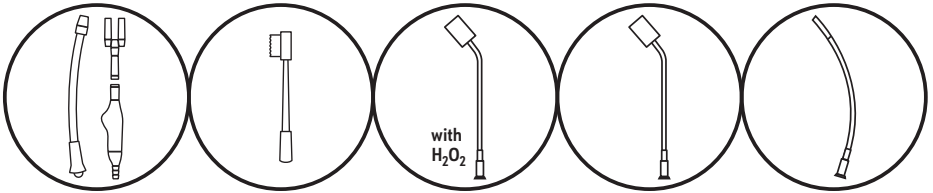


ΔVΔNOS*



BALLARD* ORAL CARE PACKS

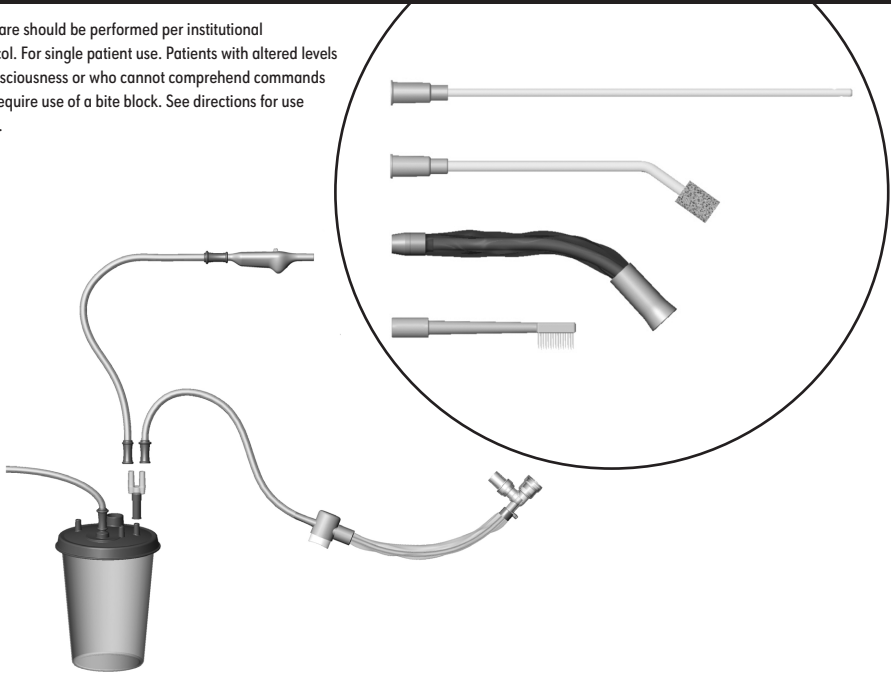


Instructions for Use



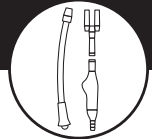
Instructions for Use

Oral care should be performed per institutional protocol. For single patient use. Patients with altered levels of consciousness or who cannot comprehend commands may require use of a bite block. See directions for use below.

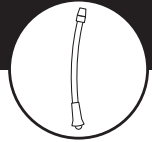


BALLARD* Prep Pack Assembly and Use

- Select **BALLARD* Prep Pack** and open package.
- Connect stepped adapter of **Suction Handle** firmly to suction canister tubing. Attach **Y-Adapter** firmly to suction port. Then firmly attach oral care suction tubing to one **Y-Adapter** port and closed suction tubing to the other. (Use the **Y-Adapter** only if using a single suction canister for both closed suctioning and oral care.)
- Connect **Oral Care Components** as needed to smooth adapter of **Suction Handle**.
- After use, slide switch to OFF. Remove tool from **Suction Handle** and discard tool.
- To store between uses, clip **Suction Handle** to top of suction tubing in upright position.



BALLARD* Yankauer Assembly and Use



- Attach Yankauer firmly to Suction Handle.

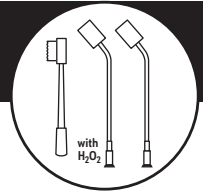


- Slide cleaning sleeve toward Suction Handle.
- To apply suction, slide switch to ON.
- Suction and clean oral cavity.
- After suctioning, advance cleaning sleeve toward tip to clean and dry the Yankauer.

- With suction still on, immerse Yankauer tip in sterile water or appropriate solution to clear Yankauer and suction tubing.
- Slide switch to OFF. (Switch should remain in OFF position when Yankauer is not in use.)
- To store, clip Suction Handle to top of suction tubing in upright position.
- Note: discard tubing, Y-Adapter, Suction Handle, and Yankauer after using for 24 hours or according to protocol.

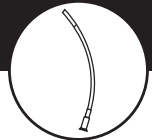


BALLARD* Toothbrush Pack with Antiplaque Solution, Suction Swab Pack with H₂O₂ and Suction Swab Pack with Alcohol-Free Mouthwash Assembly and Use



- Remove Yankauer from suction handle and set in procedure tray. Attach Toothbrush or Suction Swab.
- Peel back solution dispenser lid and moisten tool.
- To apply suction, slide switch to ON.
- Clean and suction oral cavity using appropriate tool according to hospital protocol.
- Slide switch to OFF.
- Remove tool from suction handle and discard.
- Reattach Yankauer firmly to suction handle and clip to suction tubing.

BALLARD* Suction Catheter Pack Assembly and Use



- Remove Yankauer from suction handle and set in procedure tray. Attach Suction Catheter firmly.
- To apply suction, slide switch to ON.
- Suction and clean oropharyngeal cavity.
- Slide switch to OFF.
- Remove Suction Catheter from suction handle and discard.
- Reattach Yankauer firmly to suction handle and clip to suction tubing.



Single Use Only



Non Sterile



Not made with natural rubber latex



Caution



Consult instructions for use

Distributed in the USA by Avanos Medical Sales, LLC, 5405 Windward Parkway, Alpharetta, GA 30004 USA.
In USA, 1-844-428-2667. www.avanos.com

*Registered Trademark or Trademark of Avanos Medical, Inc., or its affiliates.

© 2018 AVNS. All rights reserved. 2019-08-06

15-M1-180-01 / 70211140