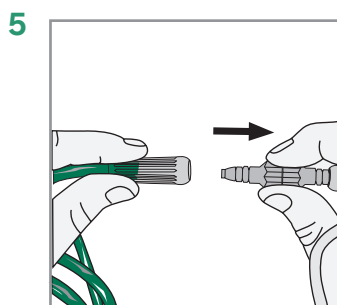
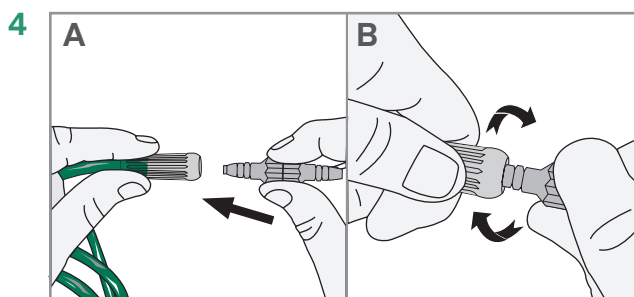
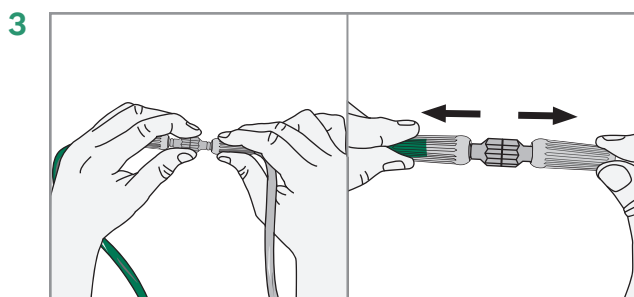
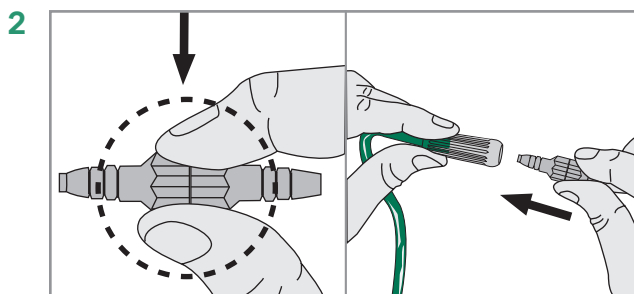
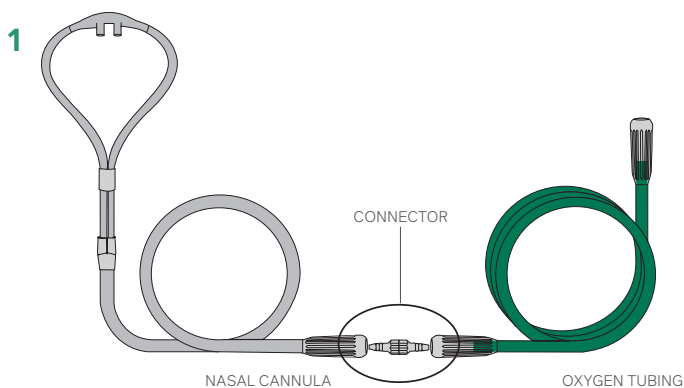


Please read and follow the Instructions for Use provided with the products prior to using the Tubing Connector

The Tubing Connector joins two pieces of oxygen tubing together. The product is intended to be used with patients who have a prescription for oxygen therapy in the home, outpatient, extended care, transport, and hospital environments. The Tubing Connector is available in swivel and non-swivel configurations.

Product Use

1. Wash hands. Open package and remove the Tubing Connector.
2. Hold the middle of the Tubing Connector and align with the oxygen tubing end.
3. Insert, push, and twist the tapered end of the Tubing Connector into oxygen tubing end connector.
4. A-Repeat step 3 to attach the other side of the connector to the nasal cannula or oxygen mask tubing.
B-Gently tug on connection to check for a secure fit.
5. To remove Connector, hold the center of the Tubing Connector, twist and pull on the tubing end connector.



Troubleshooting Guide

PROBLEM	POSSIBLE CAUSE	CORRECTIVE ACTION
No oxygen flow from nasal prongs	Flow control valve is not turned on.	Set flow control to prescribed setting.
	Oxygen system is not functioning properly or oxygen container is empty.	Switch to backup oxygen.
	The nasal cannula is disconnected from oxygen device or supply tubing.	Reconnect oxygen tubing. Ensure all tubing connections are tight and secure.
The swivel does not rotate.	Nasal cannula or oxygen tubing kinked or blocked.	Inspect cannula and oxygen tubing for kinks. Ensure tubing is not caught in bed rails or something is placed on top of tubing.
	The swivel is damaged or defective.	Replace with a new Swivel Connector.
	The swivel mechanism is dirty.	Clean the Swivel Connector.

Safety Precautions

- Oxygen is a nonflammable gas, but does support combustion. Follow your home care provider's instructions for the care and safe operation of your oxygen delivery system (e.g., oxygen cylinder, oxygen concentrator, liquid oxygen).
- Do not smoke or allow anyone to smoke around you when oxygen is used.
- Keep oxygen equipment at least 6 feet away from flames or any heat source.
- Do not use flammable products such as aerosol sprays, cleaning products near your oxygen.
- The length of the oxygen tubing plus nasal cannula should not exceed 57 feet to ensure enough pressure to deliver your set oxygen flow rate.
- Do not kink, bend or tie your oxygen tubing.
- Keep excess tubing loosely coiled and out of the way to prevent tripping on oxygen tubing.
- Use oxygen as prescribed by your doctor.
- Keep an extra Swivel Connector and other oxygen supplies available for backup.
- Swallowing hazard, do not let children or pets play with your oxygen equipment.

