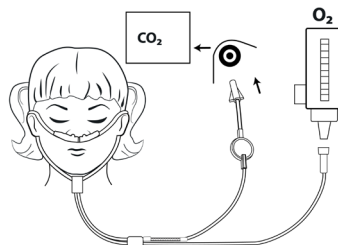


User Guide

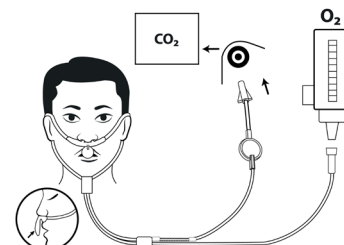
REFLECTIVE ET_{CO}₂ SAMPLING CANNULA

Please read and follow the Instructions for Use provided with the products prior to using the Reflective EtCO₂ Sampling Cannula.

The EtCO₂/O₂ nasal sampling cannula is intended to be used with spontaneously breathing patients who require supplemental oxygen and the EtCO₂/O₂ oral-nasal sampling cannula is intended to be used with spontaneously breathing patients who require supplemental oxygen and exhaled gas monitored orally or nasally.



EtCO₂ / O₂ Sampling Cannula

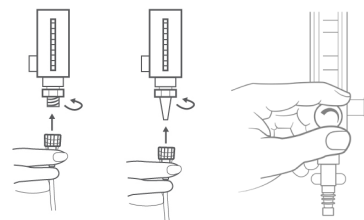


EtCO₂ / O₂ Oral-Nasal Sampling Cannula

Instructions for Set Up

1. Wash and glove your hands. Remove the EtCO₂/O₂ Sampling Cannula from the package.
2. Attach the oxygen tubing end connector to an oxygen source. Adjust the flow control knob to the prescribed liter flow (A). Check for gas flow from the nasal prongs.
3. Position the sampling cannula with the nasal prongs facing upward and curved toward the face. Insert the two prongs into the nostrils. For the oral-nasal sampling cannulas, ensure that the sampling scoop is centered over the mouth (C).
4. Wrap the headset loop up and over both ears (B). Squeeze the sides of the bolo and glide the bolo up under the chin or until snug.
5. Insert the EtCO₂ colored connector to the input port on the capnography monitor. Twist the connector clockwise until resistance is met, approximately a 1/2 turn (D). If seated properly, the monitor's pump will turn on. Avoid over-tightening as it could damage the connector on the sample line or damage the input port on the monitor.
6. Check all connections for leaks according to standard clinical procedures.
7. Ensure that the waveforms and/or EtCO₂ values appear on the monitor display.
8. Dispose of sampling lines according to standard operating procedures or local regulations for the disposal of contaminated medical waste.

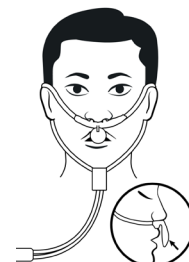
A.



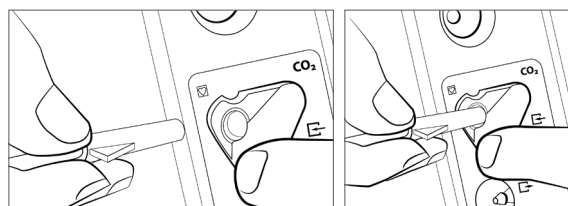
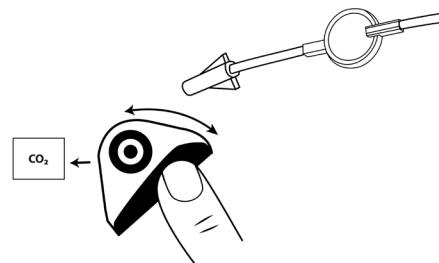
B.



C.



D.



Please read and follow the Instructions for Use provided with the products prior to using the Reflective EtCO₂ Sampling Line.

Monitoring — Maintenance

- Replace the sampling line when a blockage or an occlusion alarm signals on the monitor.
- If there is no waveform displayed, check to see if the sample line is disconnected. If the sample line is not disconnected, replace the line.
- DO NOT blow air through the line to remove moisture. This will damage the filter on the line and allow moisture to pass into the monitor.
- For high humidity environment or long-term monitoring, use the EtCO₂ sampling line with Nafion tubing and yellow-end connector.
- Carefully route the sampling line and oxygen tubing to reduce the possibility of patient entanglement or strangulation.
- Check sample line and O₂ tubing regularly during use to ensure that no kinks are present. Kinked tubing may cause inaccurate EtCO₂ readings or affect O₂ delivery to patient.
- EtCO₂ values and waveforms can be affected by certain ambient environmental conditions and certain patient conditions.

For additional information and a complete list of Warnings and Cautions, please refer to the Instructions for Use included in the device packaging.