

## User Guide

## NASAL CANNULA FOR HOME USE

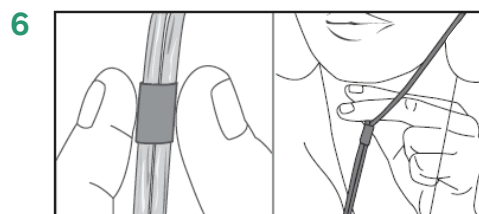
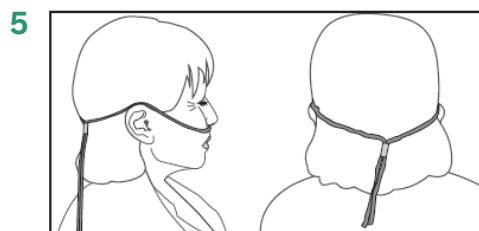
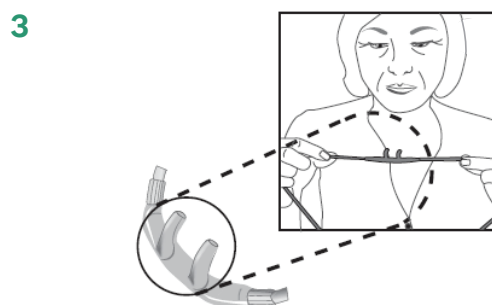
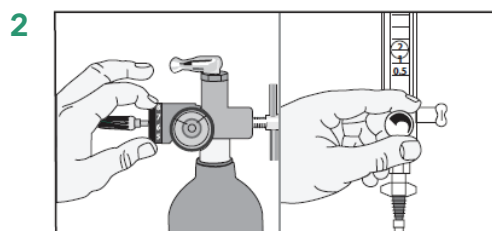
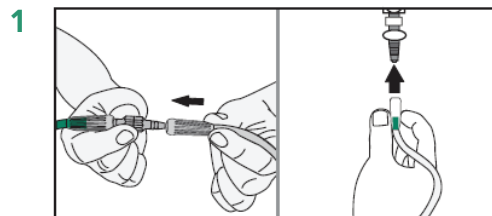
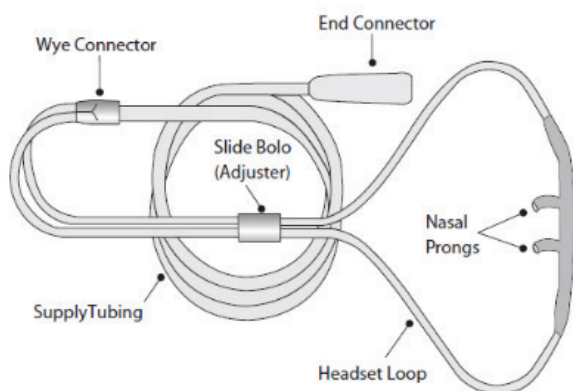
Please read and follow the Instructions for Use provided with the products prior to using the nasal cannula.

The nasal cannula is used to deliver supplemental oxygen to patients who have a prescription for oxygen therapy. Prior to home use, you and/or your caregiver should receive instructions from a trained healthcare professional on how to safely use your nasal cannula while on oxygen. Nasal cannulas are disposable and for single-patient use.

Nasal cannulas are available in sizes from infants to adults. Nasal cannulas are available in different styles with various lengths of supply tubing. Some styles may have liter flow limitations, which will be stated on the product label.

### Application

1. Wash your hands. Remove the nasal cannula from the package.
2. Attach the end connector to oxygen source, e.g., oxygen extension tubing or oxygen flow outlet (1).
3. Adjust the flow control knob to the prescribed liter flow (2).
4. Check for gas flow from the nasal prongs.
5. Position the nasal cannula with the nasal prongs facing upward and curved toward the face. Insert the two prongs into the nostrils (3).
6. Wrap the headset loop up and over both ears (4). Alternative placement: Secure the headset loop behind the head (5).
7. Squeeze the sides of the bolo (6) and glide the bolo up under the chin or until snug around your head (5).
8. Leave enough space to fit at least two fingers between the bolo and the chin (6).



# User Guide

## NASAL CANNULA FOR HOME USE

Please read and follow the Instructions for Use provided with the products prior to using the nasal cannula.

### Care and Cleaning Instructions

1. At least once a day, use a clean damp cloth to wipe off the nasal prongs and headset tubing.  
Use plain water or water with a small amount of mild liquid dish detergent to dampen the cloth.
2. Do not use strong or scented detergents, alcohol-based products, household bleach solutions or lotion soaps to clean your nasal cannula. Do not sterilize the nasal cannula.
3. Discard and replace the nasal cannula when it becomes soiled, discolored or the prongs become stiff.
4. Discard and replace your nasal cannula if you were recently were sick or getting over a cold.
5. Recommend replacing the nasal cannula at least once every 14 days. Do not use the nasal cannula for more than 30 days.

### Troubleshooting Guide

PROBLEM	POSSIBLE CAUSE	CORRECTIVE ACTION
No oxygen flow from nasal prongs	Cannot feel the airflow in your nostrils.	Check air flow by placing the prongs next to your hand or place the nasal prongs into a small container of clean water. Bubbles will appear if there is oxygen flow.
	Flow control valve is not turned on.	Set flow control to prescribed setting.
	Oxygen system is not functioning properly or oxygen container is empty.	Switch to backup oxygen.
	The nasal cannula is disconnected from oxygen device or supply tubing.	Reconnect oxygen tubing. Ensure all tubing connections are tight and secure.
	Nasal cannula or oxygen tubing kinked or blocked.	Inspect cannula and oxygen tubing for kinks and obstructions. Make sure that there is no equipment or furniture on top of the tubing.
	There is a leak in the nasal cannula or oxygen tubing.	Inspect the nasal cannula and tubing for damage (holes) and loose connections.
Moisture in nasal cannula or oxygen supply tubing	Humidifier bottle is overfilled or has tipped over.	Pour out the excess water. Do not fill the bubble humidifier past the maximum fill line. Ensure that the bubble humidifier bottle is upright.
	Water trap is full.	Empty the water trap.
	High humidity environment, or sudden drop in temperature.	Consider adding a water trap between nasal cannula and supply tubing.
Nasal dryness or irritation	Gas flow is dry.	Use normal saline nasal spray or water soluble ointment (e.g., AYR Saline Nasal Gel, KY Jelly) to moisten the inside your nostrils. If condition worsens, contact your doctor.
	No humidifier is being used.	Contact your doctor or healthcare provider to request humidification.

Continued on the next page

## User Guide

## NASAL CANNULA FOR HOME USE

Please read and follow the Instructions for Use provided with the products prior to using the nasal cannula.

### Troubleshooting Guide Cont.

PROBLEM	POSSIBLE CAUSE	CORRECTIVE ACTION
Irritation/soreness above the lip or over the ears	Headset tubing too tight. Tubing applying pressure against the skin.	Loosen the headset tubing. Place cotton padding or cushion over ears (e.g., EZ-wrap). Switch to a nasal cannula with soft headset tubing.
Skin rash and/or sores	Sensitivity or reaction to the nasal cannula PVC material.	Contact your doctor and health care provider. Consider switching to a cannula made from a different material, e.g. silicone.
	Detergent/disinfectants used to clean nasal cannula may be absorbed into the plastic and causing irritation.	Only use water and mild soap to clean the outside of your cannula. Rinse off with water. Do not submerge cannula.
	Nasal cannula is dirty.	Replace the nasal cannula, if unable to clean it with a damp cloth.
	Nasal cannula is old. The nasal prongs are stiff causing discomfort.	Replace the nasal cannula. Do not use nasal cannula for more than 30 days.
Discoloration of the cannula	A chemical reaction caused by exposure to certain lotions, creams, hair dyes, aerosol sprays or detergents.	If possible try to avoid use of facial cream where the headset tubing touches the skin. Only use water and mild soap to clean your cannula.
	Storage conditions may have been too hot, product stored in sunlight or device is old.	Replace nasal cannula. Store your extra cannulas in a well-ventilated area away from the sunlight.
Nasal cannula has a strong odor	Nasal cannula are typically made from PVC materials, which will have an odor. Some materials have a stronger smell than others.	The smell is usually strongest when removed from package. Run oxygen through the cannula for a few minutes before applying. Wipe the prongs and headset off with a damp cloth.
Bubble humidifier pop-off sounds	There is an obstruction distal to the bubble humidifier.	Check tubing and nasal cannula for obstructions or kinks.
	The flow is set to high for that type of bubble humidifier.	Ensure you are using a bubble humidifier that is compatible with your prescribed flow rate. Contact your home care provider.